

ÄNGELHOLM
RNP RWY 14

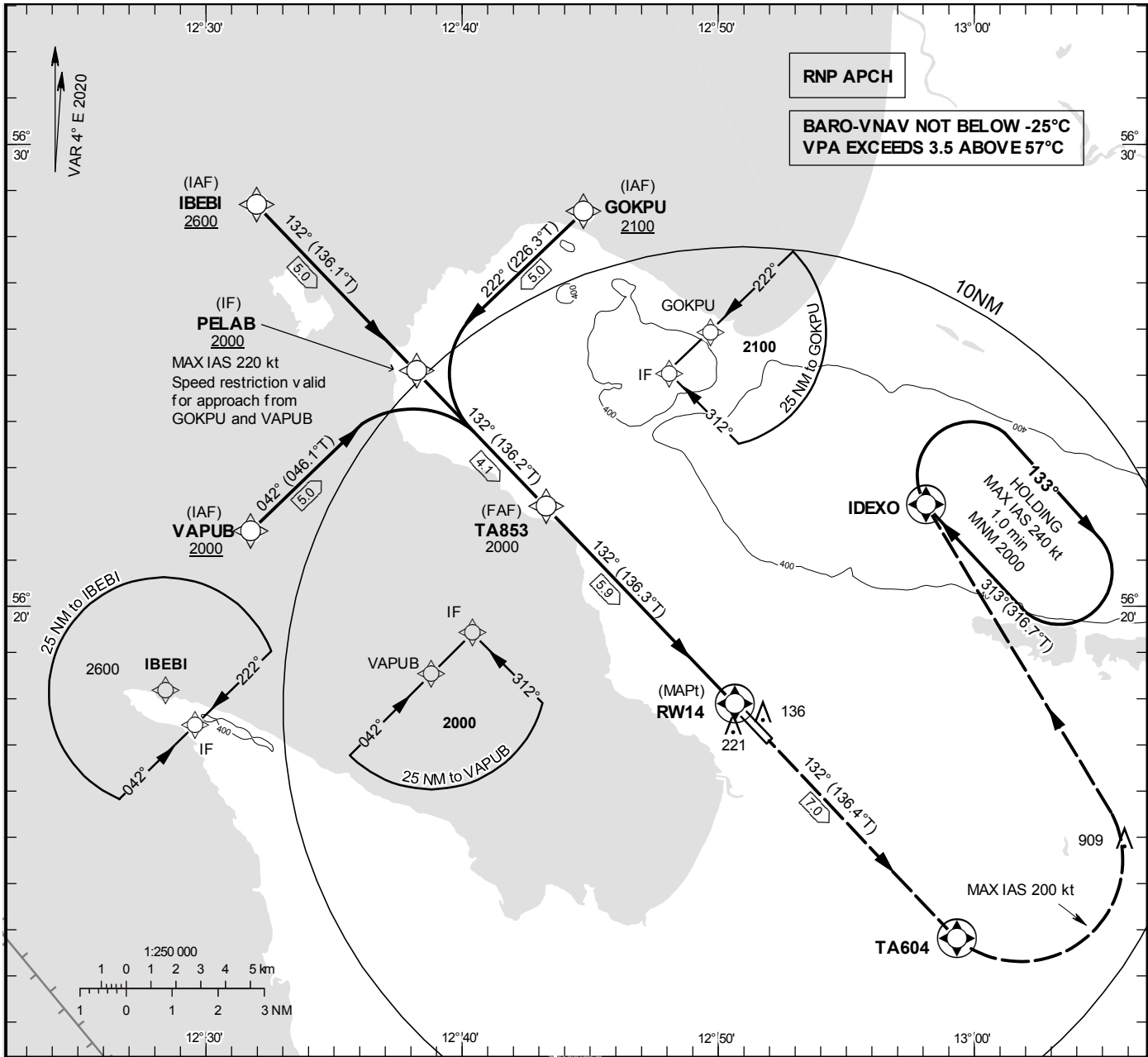
EGNOS Ch 87420 E 14A

AIP SVERIGE/SWEDEN

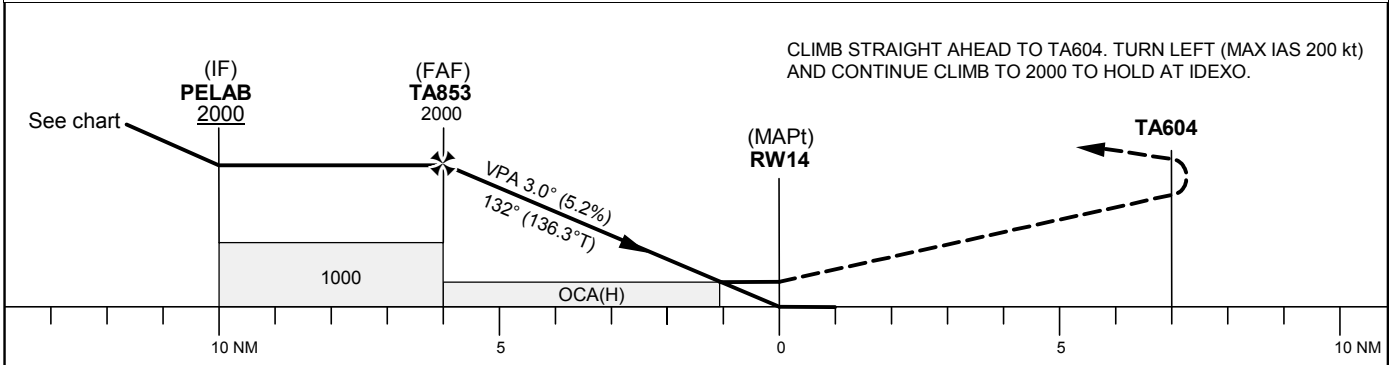
INSTRUMENT
APPROACH
CHART – ICAO

THR ELEV 60.2 ft, AD ELEV 62 ft
OCH are related to THR.
BRG are MAG (True).
ALT, HGT and ELEV in ft.

ÄNGELHOLM TOWER 127.105
ÄNGELHOLM APPROACH 132.455



TA 5000 ft AMSL RDH 50 ft



OCA (H)					Final approach	Distance FAF-MAPt 5.9 NM					
Cat of ACFT	A	B	C	D	Dist to RW14	5	4	3	2		
LPV	266 (206)	278 (218)	287 (227)	297 (237)	ALT	1700	1380	1070	750		
LNAV/VNAV	351 (291)	363 (303)	372 (312)	382 (322)	GS	kt	80	100	120	140	160
LNAV	460 (400)				Rate of descent	ft/min	425	530	635	745	850

CHANGE: Editorial

ÄNGELHOLM

Instrument Approach Procedure Coding Tables

RNP RWY 14 via IBEBI

Path Desc	Waypoint Identifier	Fly-over	Course °M(°T)	Dist (NM)	Turn Dir	Altitude	Speed	VPA/RDH	Rec Navaid	Navigation Specification
IF	IBEBI	-	-	-	-	+2600	-	-	-	RNP APCH
TF	PELAB	-	132°(136.1°)	5.0	-	+2000	-	-	-	RNP APCH

RNP RWY 14 via VAPUB

Path Desc	Waypoint Identifier	Fly-over	Course °M(°T)	Dist (NM)	Turn Dir	Altitude	Speed	VPA/RDH	Rec Navaid	Navigation Specification
IF	VAPUB	-	-	-	-	+2000	-	-	-	RNP APCH
TF	PELAB	-	042°(046.1°)	5.0	-	+2000	-220	-	-	RNP APCH

RNP RWY 14 via GOKPU

Path Desc	Waypoint Identifier	Fly-over	Course °M(°T)	Dist (NM)	Turn Dir	Altitude	Speed	VPA/RDH	Rec Navaid	Navigation Specification
IF	GOKPU	-	-	-	-	+2100	-	-	-	RNP APCH
TF	PELAB	-	222°(226.3°)	5.0	-	+2000	-220	-	-	RNP APCH

Path Desc	Waypoint Identifier	Fly-over	Course °M(°T)	Dist (NM)	Turn Dir	Altitude	Speed	VPA/RDH	Rec Navaid	Navigation Specification
IF	PELAB	-	-	-	-	+2000	-	-	-	RNP APCH
TF	TA853	-	132°(136.2°)	4.1	-	@2000	-	-	-	RNP APCH
TF	RW14	Y	132°(136.3°)	5.9	-	@110	-	-3.0/50	-	RNP APCH
TF	TA604	Y	132°(136.4°)	7.0	-	-	-	-	-	RNP APCH
DF	IDEXO	Y	-	-	L	-	-200	-	-	RNP APCH

ESTA Holding IDEXO

Path Desc	Waypoint Identifier	Fly-over	Course °M(°T)	Dist (NM)	Turn Dir	Altitude	Speed	VPA/RDH	Rec Navaid	Navigation Specification
HM	IDEXO	Y	313°(316.7°)	-	R	+2000	-240	-	-	RNAV 1

FAS Data Block

RNP RWY 14

Input data

Operation Type	0
SBAS Provider	1 (EGNOS)
Airport Identifier	ESTA
Runway	14
Runway Letter	0 (None)
Approach Performance Designator	0
Route Indicator	
Reference Path Data Selector	0
Reference Path Identifier	E14A
LTP/FTP Latitude	561752.1200N
LTP/FTP Longitude	0125039.1600E
LTP/FTP Ellipsoidal Height (metres)	55.1
FPAP Latitude	561704.8420N
Delta FPAP Latitude (seconds)	-47.2780
FPAP Longitude	0125200.1765E
Delta FPAP Longitude (seconds)	81.0165
Threshold Crossing Height	50.0
TCH Units Selector	0 (feet)
Glidepath Angle (degrees)	3.00
Course Width (metres)	105.00
Length Offset (metres)	72
HAL (metres)	40.0
VAL (metres)	50.0

Output data

Data Block	10 01 14 13 05 0E 00 00 01 34 31 05 F0 0F 29 18 70 1B 83 05 27 16 A4 8E FE F1 78 02 F4 01 2C 01 64 09 C8 FA BC 16 3F FB
Calculated CRC Value	BC163FFB

Required Additional Data

ICAO Code	ES
LTP/FTP Orthometric Height (metres)	18.4